

## Case Study – Air Film Technology

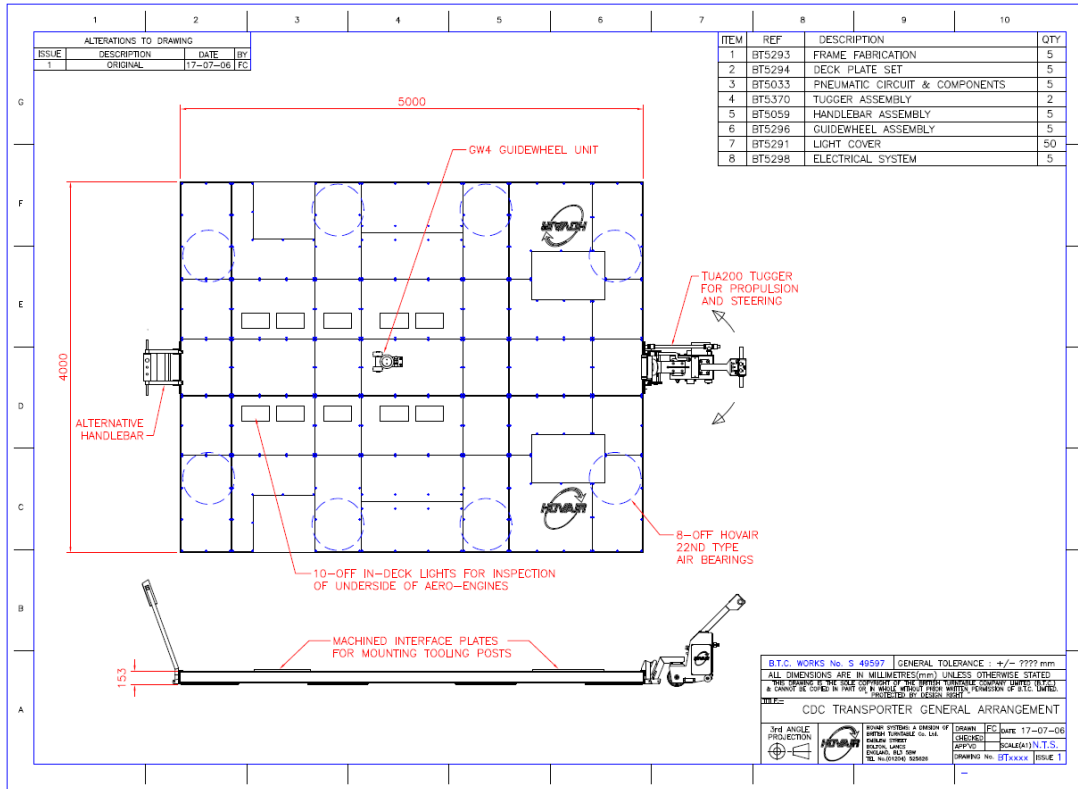


**Client:** Large UK Manufacturer of Aero-Engines for Commercial Jets

**Synopsis:** The Hovair division of **Movetech UK** designed, built and commissioned five omnidirectional air film transporters with a safe working load of 16,000kg for a new state-of-the-art inspection flow line. The prestigious Customer Delivery Centre (CDC) acts as the face of the engine manufacturer and represents the quality and innovation of the company and their processes.

In this instance the transporters are propelled by detachable air-powered tugger units. Two tuggers were supplied to move the five platforms through the flow line. The transporters can accept the tooling of four sizes of engine and can easily be manoeuvred into the docking position by a single operative.

## Transporter Specification



**Construction:** All steel construction, detachable handlebars with built-in control console, detachable powered tuggy unit with built-in controls

**Length:** 5 metre      **Width:** 4metre

**Height:** 153mm (off air)      **Capacity:** 16 tonnes

**Control:** Load selection switch, guide wheel raise/lower, air bearings controlled via 'dead-man' trigger, drive speed control, forward/reverse.

**Features:** Centrally mounted guide wheel with raise/lower option, load selection switch with two presets, proportional drive speed control, machined plates for locating engine stands, in-deck up-lighting, optional handlebar with controls.